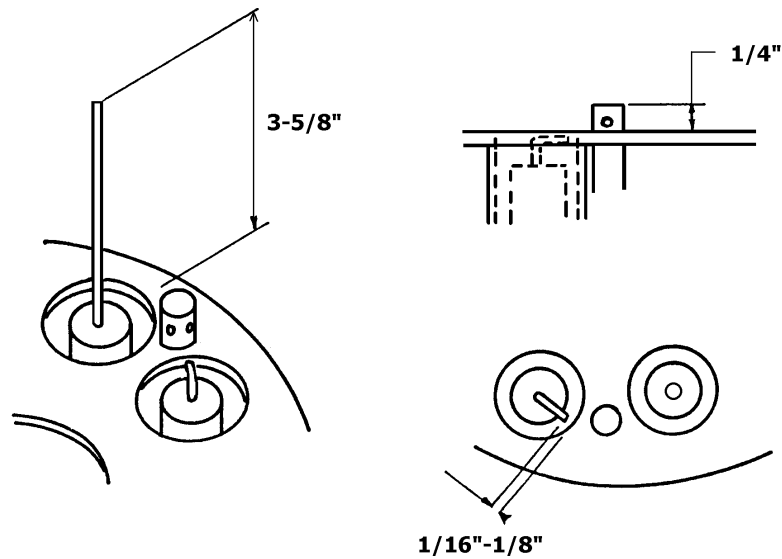


POSITIONING OF THE IGNITION ELECTRODE FOR STRAIGHT GAS BURNERS USING A FLAT DIFFUSER PLATE.



IGNITION ELECTRODE:

The ignition electrode is positioned as shown, with the horizontal part of the electrode flush with the diffuser plate. Leaving a gap of 1/16" to 1/8" wide. The pointing direction of the electrode is as shown, but is not critical.

FLAME SENSOR:

The flame sensor shown is a rectification – or flame rod. An UV scanner can be used instead. In that case the scanner tube is positioned in the same holder as the flame rod.