

No.	QTY	DESCRIPTION	GP PART No. OR VENDOR No.
1	1	COMBUSTION HEAD	930101-5006(5.5")
2	1	GASKET HEAD HOUSING	C6/8-HD GASKET
5	1	ORIFICE NIPPLE	T.B.A.
9	1	HOUSING WELD ASSY	904001-6810
10	1	AIR DAMPER ASSY	910000-7900
11	1	DAMPER SHAFT	913001-1000
12	1	TOP COVER HOUSING	928002-9800
13	1	COVER WIRING	905005-7500
14	1	AIR INLET CONE	150027-0000
15	1	MOTOR MOUNTING PLATE	050079-0000
16	1	RETENTION PLATE ASSY	915005-7000
17	1	BACKPLATE ASSY	905003-7600
18	1	SUPPORT TUBE	907003-1250
19	1	PILOT TUBE ASSY	924003-1500
20	1	ELECTRIC MOTOR	1/3HP-3600-56C
21	1	IGNITION TRANSFORMER	1092S
22	1	AIRFLOW SWITCH	AFS-A
23	1	PILOT SOLENOID VALVE	SV311A02N6CF5
24	1	PILOT GAS REGULATOR	RV47L-3/8"
25	1	PILOT FIRING VALVE	3380-3/8"
26	1	LINKAGE ARM	010039-0004
27	1	CONTROL QUADRANT	560002-0000
28	1	SIGHT GLASS	010136-0000
29	1	SIGHT GLASS RETAINER	240172-0000
30	2	SIGHT GLASS GASKET	220008-0000
31	1	IGNITION ELECTRODE	921000-0700
32	1	FLAME ROD	921000-0800
33	1	JUNCTION BOX	75171-K
45	1	BLOWER WHEEL	340059-0000

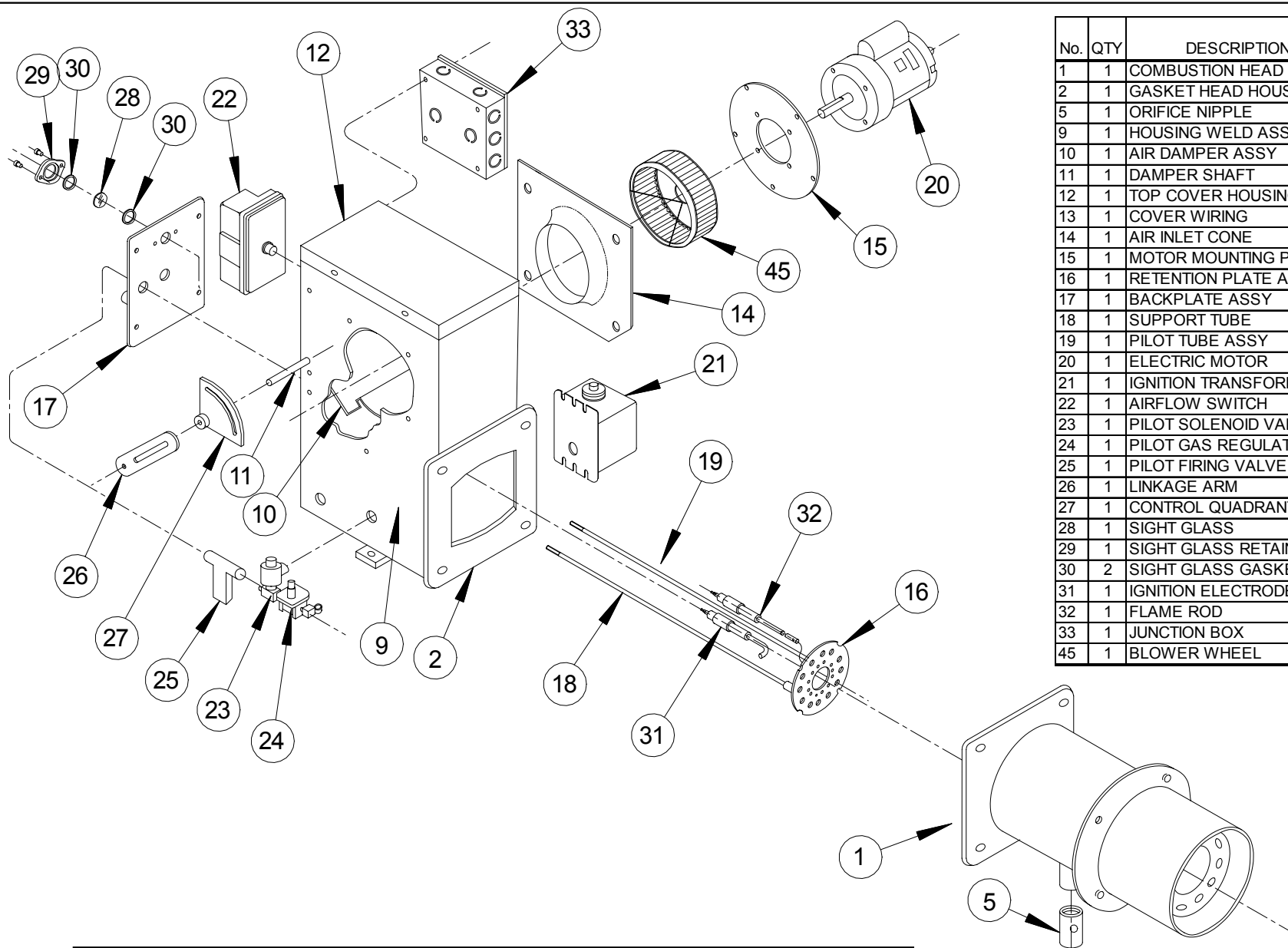
NOTE: PILOT COMPONENTS AND COMBUSTION HEAD MAY VARY

GP COMBUSTION EQUIPMENT INC.
CAMBRIDGE, ONTARIO

TITLE
MODEL C6.1-N-03
CUSTOMER: TYPICAL

SIZE A	DATE SEPT 1,04	DWG NO. ML-6.1-TYP	BY RR	REV A
-----------	-------------------	-----------------------	----------	----------

SCALE: NTS ALL DIMENSIONS ARE INCHES SHEET: 1 OF 1



No.	QTY	DESCRIPTION	GP PART No. OR VENDOR No.
1	1	COMBUSTION HEAD	930101-5006(5.5")
2	1	GASKET HEAD HOUSING	C6/8-HD GASKET
5	1	ORIFICE NIPPLE	T.B.A.
9	1	HOUSING WELD ASSY	904001-6810
10	1	AIR DAMPER ASSY	910000-7900
11	1	DAMPER SHAFT	913001-1000
12	1	TOP COVER HOUSING	928002-9800
13	1	COVER WIRING	905005-7500
14	1	AIR INLET CONE	150027-0000
15	1	MOTOR MOUNTING PLATE	050079-0000
16	1	RETENTION PLATE ASSY	915005-7000
17	1	BACKPLATE ASSY	905003-7600
18	1	SUPPORT TUBE	907003-1250
19	1	PILOT TUBE ASSY	924003-1500
20	1	ELECTRIC MOTOR	1/3HP-3600-56C
21	1	IGNITION TRANSFORMER	1092S
22	1	AIRFLOW SWITCH	AFS-A
23	1	PILOT SOLENOID VALVE	SV311A02N6CF5
24	1	PILOT GAS REGULATOR	RV47L-3/8"
25	1	PILOT FIRING VALVE	3380-3/8"
26	1	LINKAGE ARM	010039-0004
27	1	CONTROL QUADRANT	560002-0000
28	1	SIGHT GLASS	010136-0000
29	1	SIGHT GLASS RETAINER	240172-0000
30	2	SIGHT GLASS GASKET	220008-0000
31	1	IGNITION ELECTRODE	921000-0700
32	1	FLAME ROD	921000-0800
33	1	JUNCTION BOX	75171-K
45	1	BLOWER WHEEL	340043-0000

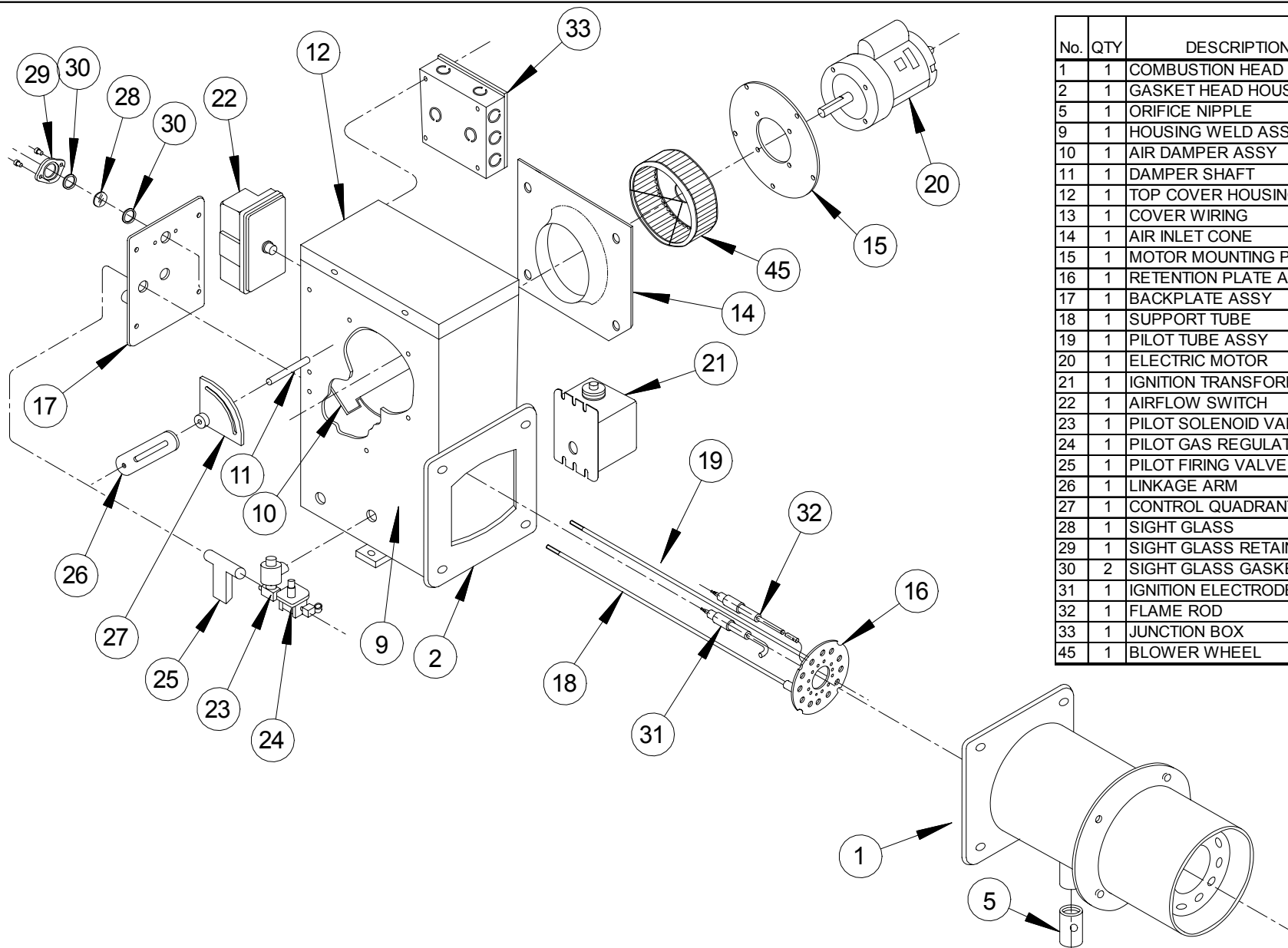
NOTE: PILOT COMPONENTS AND COMBUSTION HEAD MAY VARY

GP COMBUSTION EQUIPMENT INC.
CAMBRIDGE, ONTARIO

TITLE
MODEL C6.2-N-03
CUSTOMER: TYPICAL

SIZE A	DATE SEPT 1,04	DWG NO. ML-6.2-TYP	BY RR	REV A
-----------	-------------------	-----------------------	----------	----------

SCALE: NTS ALL DIMENSIONS ARE INCHES SHEET: 1 OF 1



No.	QTY	DESCRIPTION	GP PART No. OR VENDOR No.
1	1	COMBUSTION HEAD	930101-5006(5.5")
2	1	GASKET HEAD HOUSING	C6/8-HD GASKET
5	1	ORIFICE NIPPLE	T.B.A.
9	1	HOUSING WELD ASSY	904001-6810
10	1	AIR DAMPER ASSY	910000-7900
11	1	DAMPER SHAFT	913001-1000
12	1	TOP COVER HOUSING	928002-9800
13	1	COVER WIRING	905005-7500
14	1	AIR INLET CONE	150204-0000
15	1	MOTOR MOUNTING PLATE	050079-0000
16	1	RETENTION PLATE ASSY	915005-7000
17	1	BACKPLATE ASSY	905003-7600
18	1	SUPPORT TUBE	907003-1250
19	1	PILOT TUBE ASSY	924003-1500
20	1	ELECTRIC MOTOR	1/3HP-3600-56C
21	1	IGNITION TRANSFORMER	1092S
22	1	AIRFLOW SWITCH	AFS-A
23	1	PILOT SOLENOID VALVE	SV311A02N6CF5
24	1	PILOT GAS REGULATOR	RV47L-3/8"
25	1	PILOT FIRING VALVE	3380-3/8"
26	1	LINKAGE ARM	010039-0004
27	1	CONTROL QUADRANT	560002-0000
28	1	SIGHT GLASS	010136-0000
29	1	SIGHT GLASS RETAINER	240172-0000
30	2	SIGHT GLASS GASKET	220008-0000
31	1	IGNITION ELECTRODE	921000-0700
32	1	FLAME ROD	921000-0800
33	1	JUNCTION BOX	75171-K
45	1	BLOWER WHEEL	340002-0000

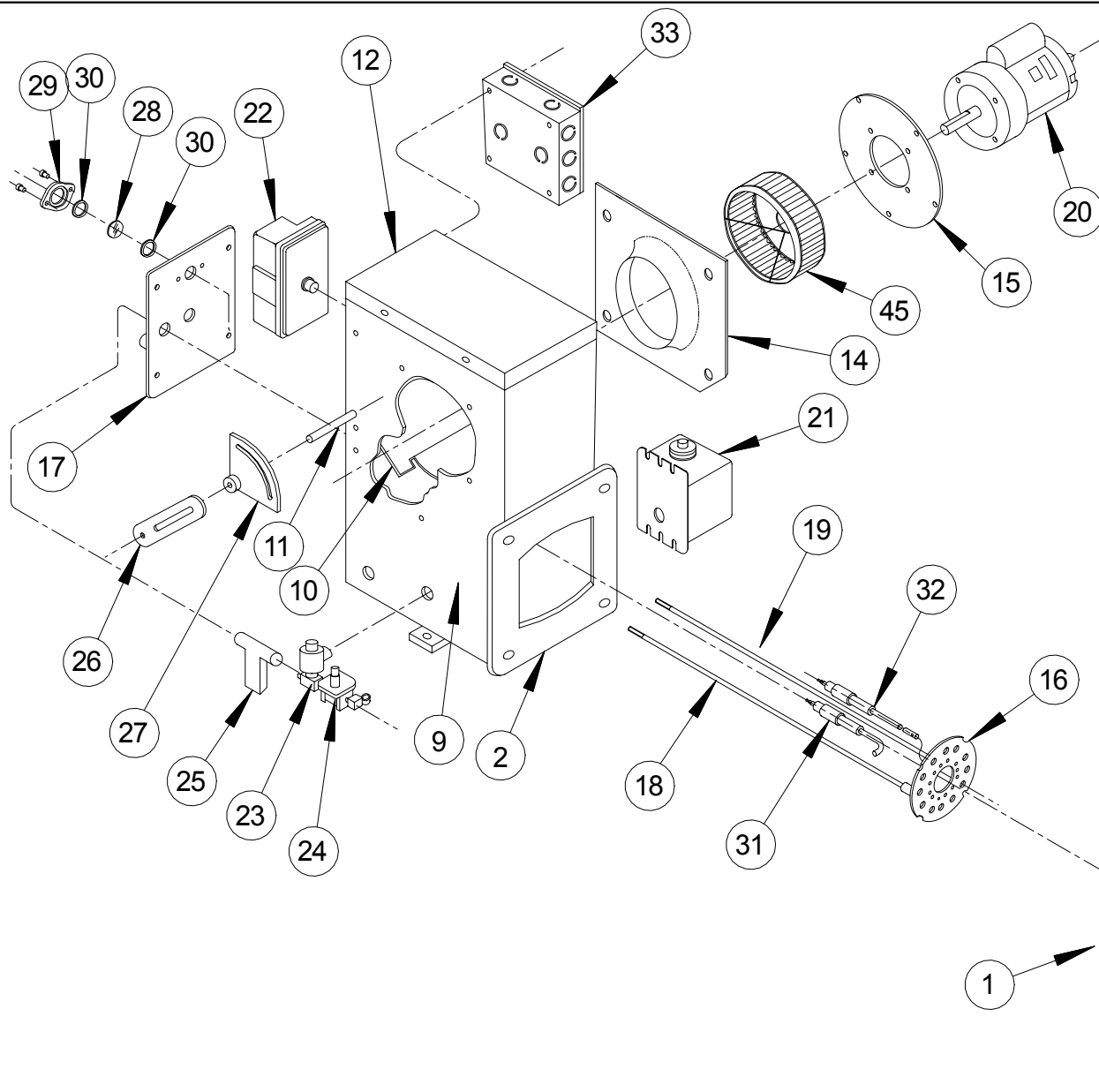
NOTE: PILOT COMPONENTS AND COMBUSTION HEAD MAY VARY

GP COMBUSTION EQUIPMENT INC.
CAMBRIDGE, ONTARIO

TITLE
MODEL C6.9-N-03
CUSTOMER: TYPICAL

SIZE A	DATE SEPT 1,04	DWG NO. ML-6.9-TYP	BY RR	REV A
-----------	-------------------	-----------------------	----------	----------

SCALE: NTS ALL DIMENSIONS ARE INCHES SHEET: 1 OF 1



No.	QTY	DESCRIPTION	GP PART No. OR VENDOR No.
1	1	COMBUSTION HEAD	930102-5008(8")
2	1	GASKET HEAD HOUSING	C6/8-HD GASKET
5	1	ORIFICE NIPPLE	T.B.A.
9	1	HOUSING WELD ASSY	904001-6810
10	1	AIR DAMPER ASSY	910000-7900
11	1	DAMPER SHAFT	913001-1000
12	1	TOP COVER HOUSING	928002-9800
13	1	COVER WIRING	905005-7500
14	1	AIR INLET CONE	150027-0000
15	1	MOTOR MOUNTING PLATE	050079-0000
16	1	RETENTION PLATE ASSY	905005-7200
17	1	BACKPLATE ASSY	905003-7600
18	1	SUPPORT TUBE	907003-1290
19	1	PILOT TUBE ASSY	924003-1600
20	1	ELECTRIC MOTOR	1/2HP-3600-56C
21	1	IGNITION TRANSFORMER	1092S
22	1	AIRFLOW SWITCH	AFS-A
23	1	PILOT SOLENOID VALVE	SV311A02N6CF5
24	1	PILOT GAS REGULATOR	RV47L-3/8"
25	1	PILOT FIRING VALVE	3380-3/8"
26	1	LINKAGE ARM	010039-0004
27	1	CONTROL QUADRANT	560002-0000
28	1	SIGHT GLASS	010136-0000
29	1	SIGHT GLASS RETAINER	240172-0000
30	2	SIGHT GLASS GASKET	220008-0000
31	1	IGNITION ELECTRODE	921000-0700
32	1	FLAME ROD	921000-0800
33	1	JUNCTION BOX	75171-K
45	1	BLOWER WHEEL	340043-0000

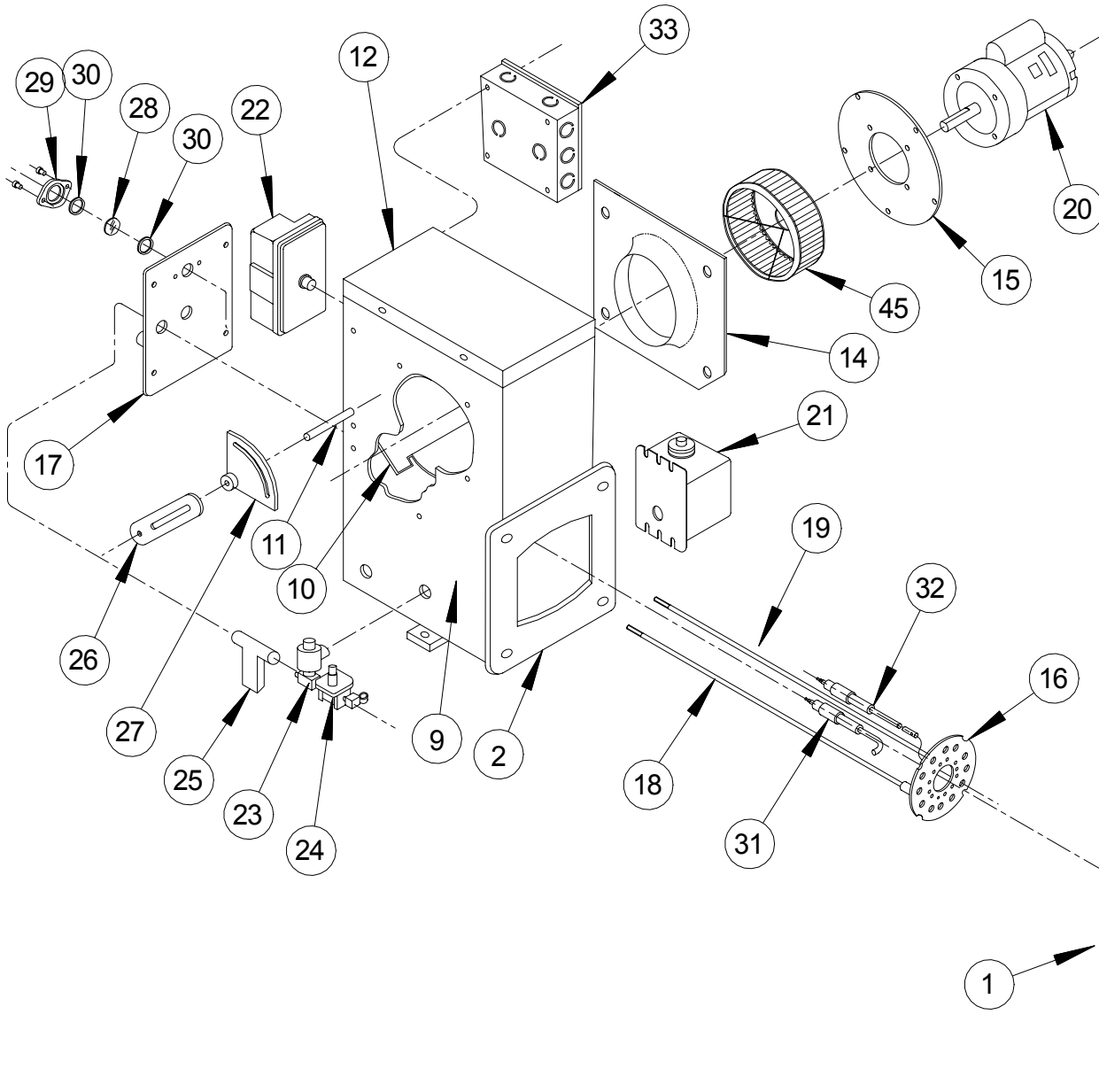
NOTE: PILOT COMPONENTS AND COMBUSTION HEAD MAY VARY

GP COMBUSTION EQUIPMENT INC.
CAMBRIDGE, ONTARIO

TITLE
MODEL C8-N-05
CUSTOMER: TYPICAL

SIZE A	DATE SEPT 1,04	DWG NO. ML-8-TYP	BY RR	REV A
-----------	-------------------	---------------------	----------	----------

SCALE: NTS ALL DIMENSIONS ARE INCHES SHEET: 1 OF 1



No.	QTY	DESCRIPTION	GP PART No. OR VENDOR No.
1	1	COMBUSTION HEAD	930102-5008(8")
2	1	GASKET HEAD HOUSING	C6/8-HD GASKET
5	1	ORIFICE NIPPLE	T.B.A.
9	1	HOUSING WELD ASSY	904001-6810
10	1	AIR DAMPER ASSY	910000-7900
11	1	DAMPER SHAFT	913001-1000
12	1	TOP COVER HOUSING	928002-9800
13	1	COVER WIRING	905005-7500
14	1	AIR INLET CONE	150027-0000
15	1	MOTOR MOUNTING PLATE	050079-0000
16	1	RETENTION PLATE ASSY	905005-7200
17	1	BACKPLATE ASSY	905003-7600
18	1	SUPPORT TUBE	907003-1290
19	1	PILOT TUBE ASSY	924003-1600
20	1	ELECTRIC MOTOR	3/4HP-3600-56C
21	1	IGNITION TRANSFORMER	1092S
22	1	AIRFLOW SWITCH	AFS-A
23	1	PILOT SOLENOID VALVE	SV311A02N6CF5
24	1	PILOT GAS REGULATOR	RV47L-3/8"
25	1	PILOT FIRING VALVE	3380-3/8"
26	1	LINKAGE ARM	010039-0004
27	1	CONTROL QUADRANT	560002-0000
28	1	SIGHT GLASS	010136-0000
29	1	SIGHT GLASS RETAINER	240172-0000
30	2	SIGHT GLASS GASKET	220008-0000
31	1	IGNITION ELECTRODE	921000-0700
32	1	FLAME ROD	921000-0800
33	1	JUNCTION BOX	75171-K
45	1	BLOWER WHEEL	340014-1000

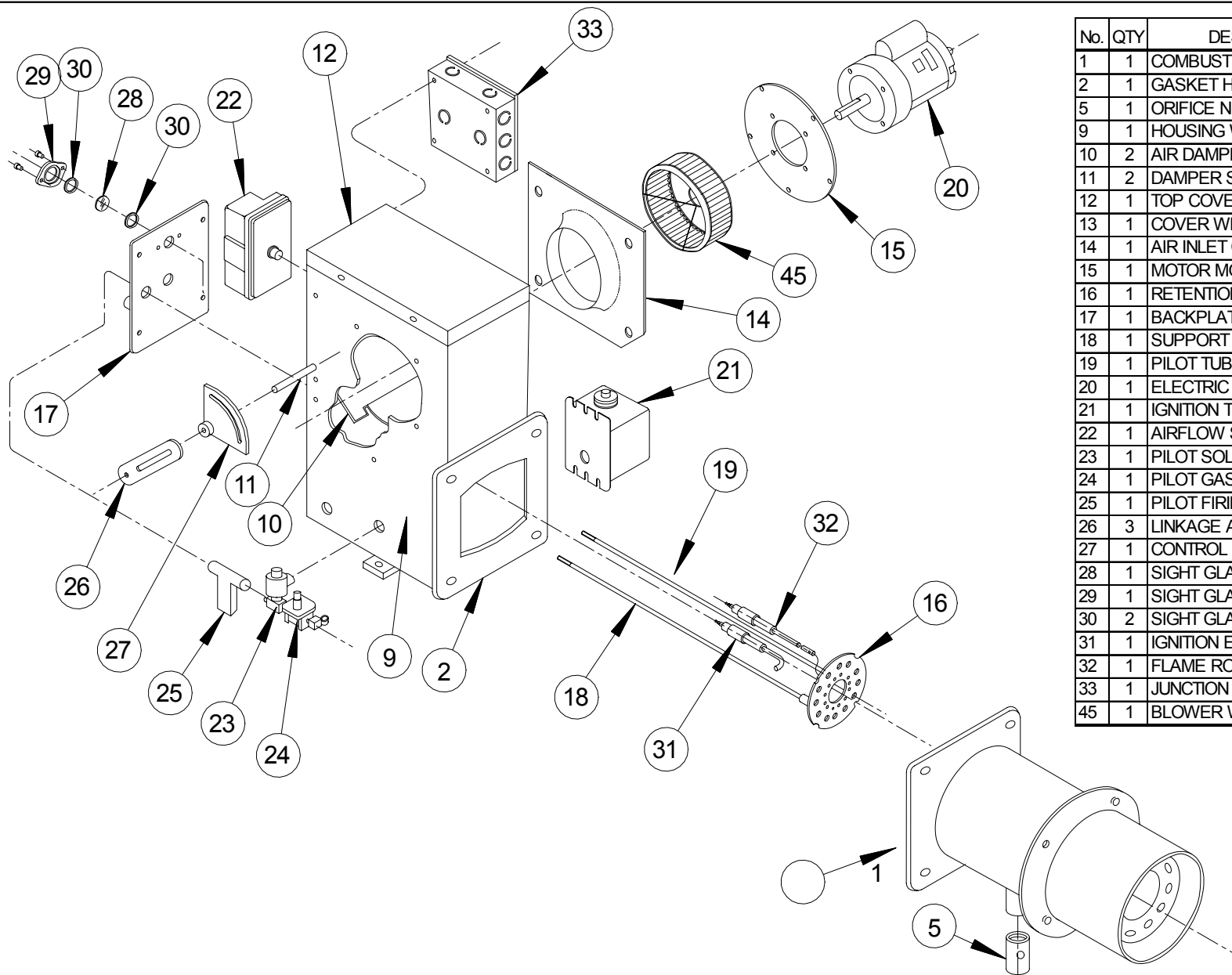
NOTE: PILOT COMPONENTS AND COMBUSTION HEAD MAY VARY

GP COMBUSTION EQUIPMENT INC.
CAMBRIDGE, ONTARIO

TITLE
MODEL C8.1-N-07
CUSTOMER: TYPICAL

SIZE A	DATE SEPT 1,04	DWG NO. ML-8.1-TYP	BY: RR	REV A
-----------	-------------------	-----------------------	-----------	----------

SCALE: NTS ALL DIMENSIONS ARE INCHES SHEET: 1 OF 1



No.	QTY	DESCRIPTION	PART NUMBER
1	1	COMBUSTION HEAD	930103-5010(8")
2	1	GASKET HEAD HOUSING	C10-HD GASKET
5	1	ORIFICE NIPPLE	T.B.A.
9	1	HOUSING WELD ASSY	904001-6900
10	2	AIR DAMPER ASSY	910000-7900
11	2	DAMPER SHAFT	913001-1000
12	1	TOP COVER HOUSING	928002-9900
13	1	COVER WIRING	905005-7500
14	1	AIR INLET CONE	150309-0000
15	1	MOTOR MOUNTING PLATE	051029-0001
16	1	RETENTION PLATE ASSY	915005-5200
17	1	BACKPLATE ASSY	905005-7700
18	1	SUPPORT TUBE	907003-1260
19	1	PILOT TUBE ASSY	907003-1270
20	1	ELECTRIC MOTOR	3 HP-3600-56C
21	1	IGNITION TRANSFORMER	1092S
22	1	AIRFLOW SWITCH	AFS-A
23	1	PILOT SOLENOID VALVE	SV311A02N6CF5
24	1	PILOT GAS REGULATOR	RV47L-3/8"
25	1	PILOT FIRING VALVE	3380-3/8"
26	3	LINKAGE ARM	010039-0004
27	1	CONTROL QUADRANT	560002-0000
28	1	SIGHT GLASS	010136-0000
29	1	SIGHT GLASS RETAINER	240172-0000
30	2	SIGHT GLASS GASKET	220008-0000
31	1	IGNITION ELECTRODE	921000-0700
32	1	FLAME ROD	921000-0800
33	1	JUNCTION BOX	75171-K
45	1	BLOWER WHEEL	340025-1000

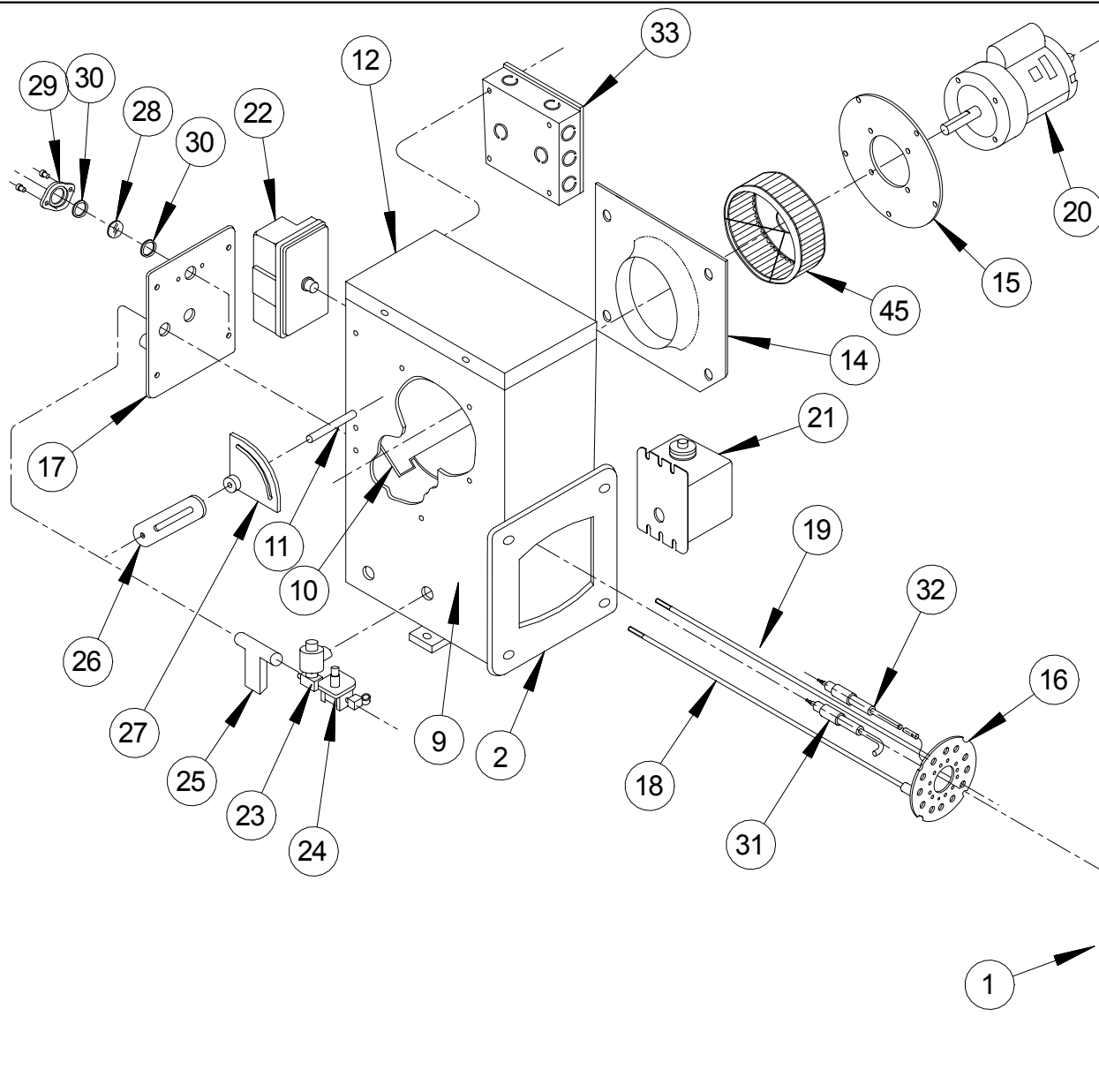
NOTE: PILOT COMPONENTS AND COMBUSTION HEAD MAY VARY

GP COMBUSTION EQUIPMENT INC.
CAMBRIDGE, ONTARIO

TITLE
MODEL C10.1-N-30
CUSTOMER: TYPICAL

SIZE A	DATE SEPT 1,04	DWG NO. ML-10.1-TYP	BY RR	REV A
-----------	-------------------	------------------------	----------	----------

SCALE: NTS ALL DIMENSIONS ARE INCHES SHEET: 1 OF 1



No.	QTY	DESCRIPTION	GP PART No. OR VENDOR No.
1	1	COMBUSTION HEAD	930103-5010(8")
2	1	GASKET HEAD HOUSING	C10-HD GASKET
5	1	ORIFICE NIPPLE	T.B.A.
9	1	HOUSING WELD ASSY	904001-6900
10	2	AIR DAMPER ASSY	910000-7900
11	2	DAMPER SHAFT	913001-1000
12	1	TOP COVER HOUSING	928002-9900
13	1	COVER WIRING	905005-7500
14	1	AIR INLET CONE	150510-0000
15	1	MOTOR MOUNTING PLATE	051029-0001
16	1	RETENTION PLATE ASSY	915005-5200
17	1	BACKPLATE ASSY	905005-7700
18	1	SUPPORT TUBE	907003-1260
19	1	PILOT TUBE ASSY	907003-1270
20	1	ELECTRIC MOTOR	1.5 HP-3600-56C
21	1	IGNITION TRANSFORMER	1092S
22	1	AIRFLOW SWITCH	AFS-A
23	1	PILOT SOLENOID VALVE	SV311A02N6CF5
24	1	PILOT GAS REGULATOR	RV47L-3/8"
25	1	PILOT FIRING VALVE	3380-3/8"
26	3	LINKAGE ARM	010039-0004
27	1	CONTROL QUADRANT	560002-0000
28	1	SIGHT GLASS	010136-0000
29	1	SIGHT GLASS RETAINER	240172-0000
30	2	SIGHT GLASS GASKET	220008-0000
31	1	IGNITION ELECTRODE	921000-0700
32	1	FLAME ROD	921000-0800
33	1	JUNCTION BOX	75171-K
45	1	BLOWER WHEEL	340015-1000

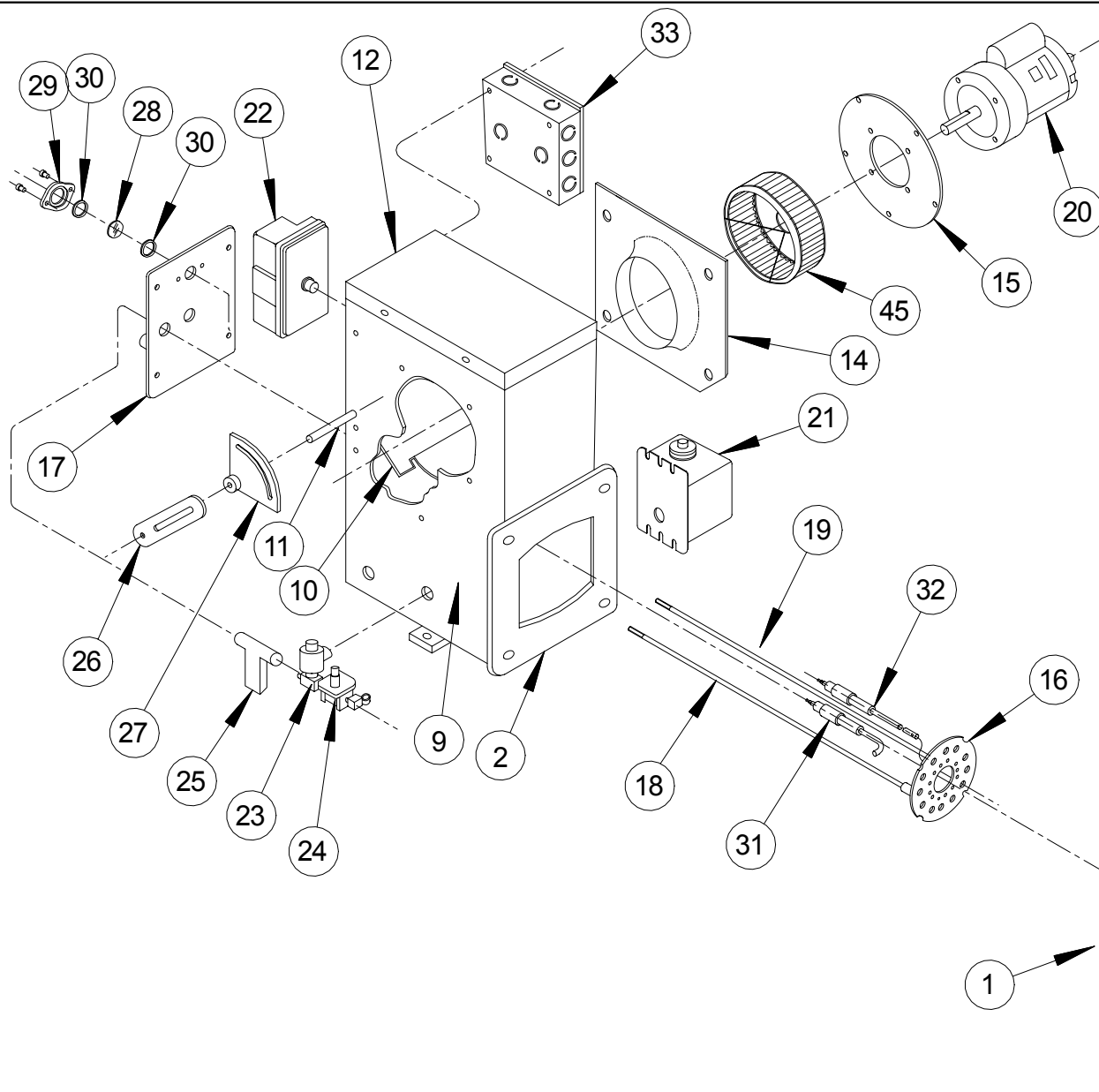
NOTE: PILOT COMPONENTS AND COMBUSTION HEAD MAY VARY

GP COMBUSTION EQUIPMENT INC.
CAMBRIDGE, ONTARIO

TITLE
MODEL C10.9-N-15
CUSTOMER: TYPICAL

SIZE	DATE	DWG NO.	BY:	REV
A	SEPT 1,04	ML-10.9-TYP	RR	A

SCALE: NTS ALL DIMENSIONS ARE INCHES SHEET: 1 OF 1



No.	QTY	DESCRIPTION	GP PART No. OR VENDOR No.
1	1	COMBUSTION HEAD	930103-5010(8")
2	1	GASKET HEAD HOUSING	C10-HD GASKET
5	1	ORIFICE NIPPLE	T.B.A.
9	1	HOUSING WELD ASSY	904001-6900
10	2	AIR DAMPER ASSY	910000-7900
11	2	DAMPER SHAFT	913001-1000
12	1	TOP COVER HOUSING	928002-9900
13	1	COVER WIRING	905005-7500
14	1	AIR INLET CONE	150510-0000
15	1	MOTOR MOUNTING PLATE	905003-7800
16	1	RETENTION PLATE ASSY	915005-5200
17	1	BACKPLATE ASSY	905005-7700
18	1	SUPPORT TUBE	907003-1260
19	1	PILOT TUBE ASSY	907003-1270
20	1	ELECTRIC MOTOR	1HP-360O-56C
21	1	IGNITION TRANSFORMER	1092S
22	1	AIRFLOW SWITCH	AFS-A
23	1	PILOT SOLENOID VALVE	SV311A02N6CF5
24	1	PILOT GAS REGULATOR	RV47L3/8"
25	1	PILOT FIRING VALVE	3380-3/8"
26	3	LINKAGE ARM	010039-0004
27	1	CONTROL QUADRANT	560002-0000
28	1	SIGHT GLASS	010136-0000
29	1	SIGHT GLASS RETAINER	240172-0000
30	2	SIGHT GLASS GASKET	220008-0000
31	1	IGNITION ELECTRODE	921000-0700
32	1	FLAME ROD	921000-0800
33	1	JUNCTION BOX	75171-K
45	1	BLOWER WHEEL	340014-0000

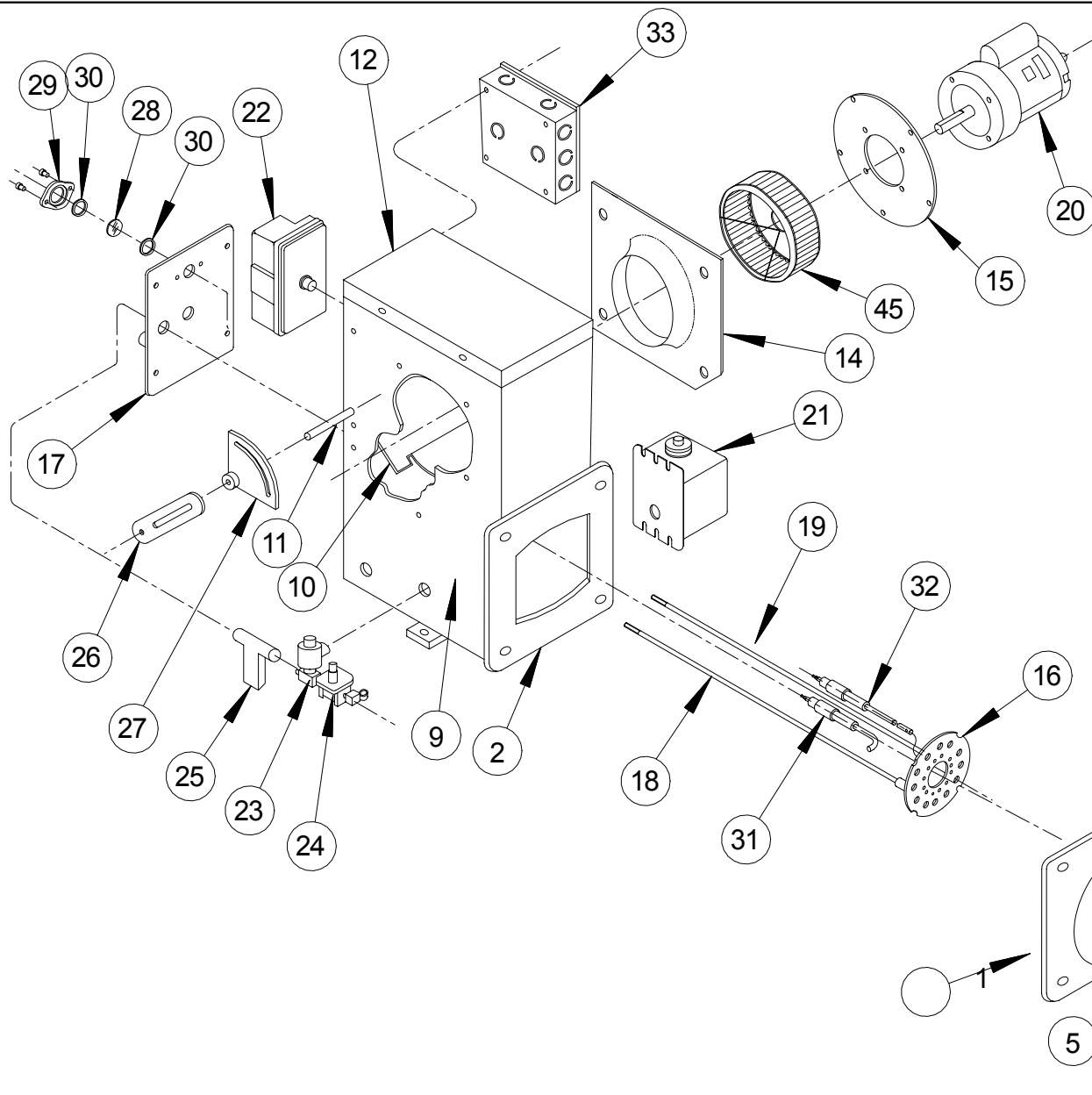
NOTE: PILOT COMPONENTS AND COMBUSTION HEAD MAY VARY

GP COMBUSTION EQUIPMENT INC.
CAMBRIDGE, ONTARIO

TITLE
MODEL C10.8-N-10
CUSTOMER: TYPICAL

SIZE	DATE	DWG NO.	BY:	REV
A	SEPT 1,04	ML-10.8-TYP	RR	A

SCALE: NTS ALL DIMENSIONS ARE INCHES SHEET: 1 OF 1



No.	QTY	DESCRIPTION	PART NUMBER
1	1	COMBUSTION HEAD	930103-5010(8")
2	1	GASKET HEAD HOUSING	C10-HD GASKET
5	1	ORIFICE NIPPLE	T.B.A.
9	1	HOUSING WELD ASSY	904001-6900
10	2	AIR DAMPER ASSY	910000-7900
11	2	DAMPER SHAFT	913001-1000
12	1	TOP COVER HOUSING	928002-9900
13	1	COVER WIRING	905005-7500
14	1	AIR INLET CONE	150171-0000
15	1	MOTOR MOUNTING PLATE	051029-0001
16	1	RETENTION PLATE ASSY	915005-5200
17	1	BACKPLATE ASSY	905005-7700
18	1	SUPPORT TUBE	907003-1260
19	1	PILOT TUBE ASSY	907003-1270
20	1	ELECTRIC MOTOR	2 HP-3600-56C
21	1	IGNITION TRANSFORMER	1092S
22	1	AIRFLOW SWITCH	AFS-A
23	1	PILOT SOLENOID VALVE	SV311A02N6CF5
24	1	PILOT GAS REGULATOR	RV47L-3/8"
25	1	PILOT FIRING VALVE	3380-3/8"
26	3	LINKAGE ARM	010039-0004
27	1	CONTROL QUADRANT	560002-0000
28	1	SIGHT GLASS	010136-0000
29	1	SIGHT GLASS RETAINER	240172-0000
30	2	SIGHT GLASS GASKET	220008-0000
31	1	IGNITION ELECTRODE	921000-0700
32	1	FLAME ROD	921000-0800
33	1	JUNCTION BOX	75171-K
45	1	BLOWER WHEEL	340019-1000

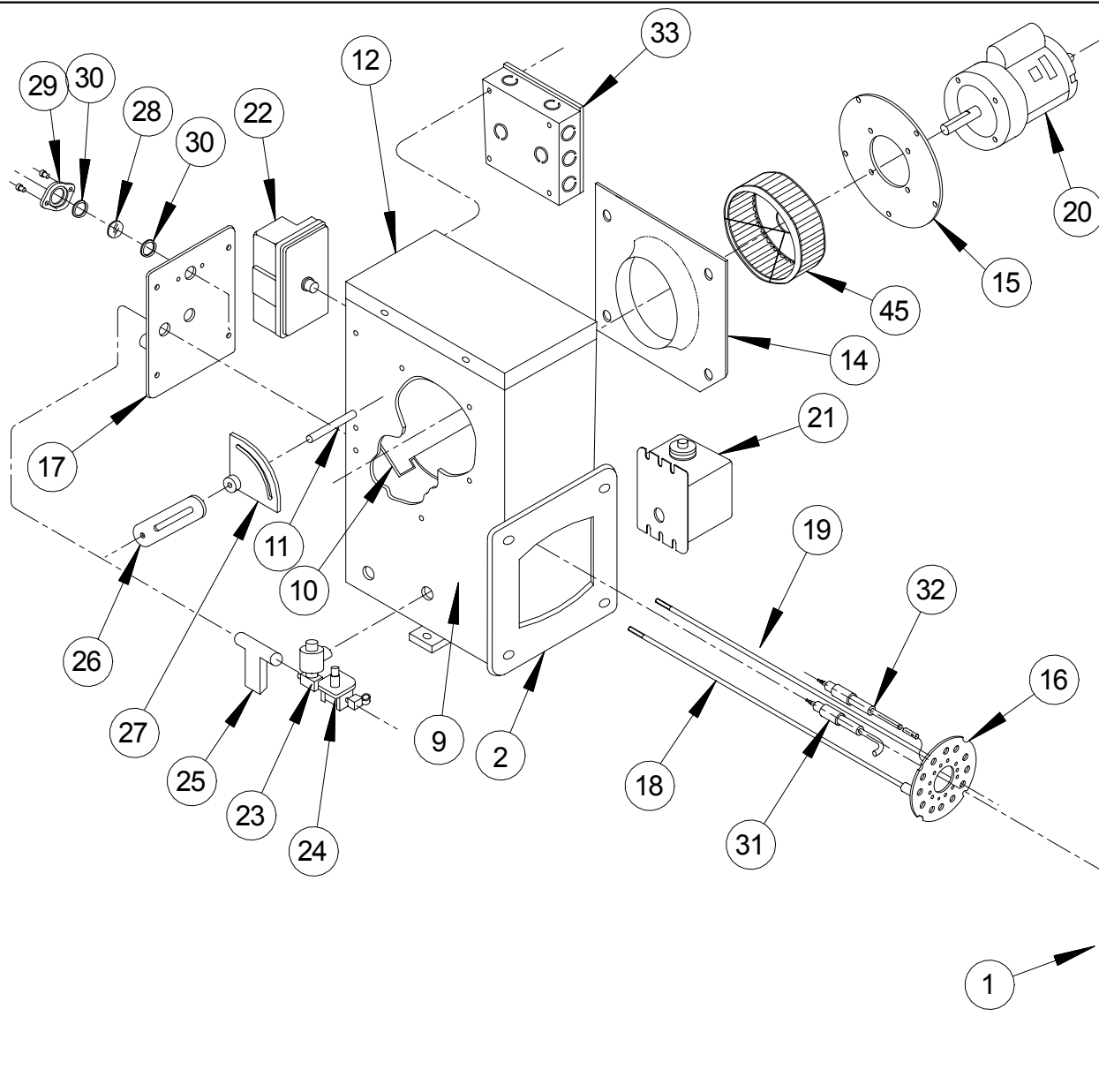
NOTE: PILOT COMPONENTS AND COMBUSTION HEAD MAY VARY

GP COMBUSTION EQUIPMENT INC.
CAMBRIDGE, ONTARIO

TITLE
MODEL C10-N-20
CUSTOMER: TYPICAL

SIZE A	DATE SEPT 1,04	DWG NO. ML-10-TYP	BY RR	REV A
-----------	-------------------	----------------------	----------	----------

SCALE: NTS ALL DIMENSIONS ARE INCHES SHEET: 1 OF 1



No.	QTY	DESCRIPTION	GP PART No. OR VENDOR No.
1	1	COMBUSTION HEAD	930104-5012(8")
2	1	GASKET HEAD HOUSING	C12-HD GASKET
5	1	ORIFICE NIPPLE	T.B.A.
9	1	HOUSING WELD ASSY	904001-7000
10	1	AIR DAMPER ASSY	910000-6900
11	1	DAMPER SHAFT	913001-0900
12	1	TOP COVER HOUSING	928002-9700
13	1	COVER WIRING	905005-7500
14	1	AIR INLET CONE	150007-0000
15	1	MOTOR MOUNTING PLATE	051030-0007
16	1	RETENTION PLATE ASSY	905006-7900
17	1	BACKPLATE ASSY	905006-7800
18	1	SUPPORT TUBE	907003-5200
19	1	PILOT TUBE ASSY	907003-5300
20	1	ELECTRIC MOTOR	5 HP-3600-145TC
21	1	IGNITION TRANSFORMER	1092S
22	1	AIRFLOW SWITCH	AFS-A
23	1	PILOT SOLENOID VALVE	SV311A02N6CF5
24	1	PILOT GAS REGULATOR	RV47L-3/8"
25	1	PILOT FIRING VALVE	3380-3/8"
26	1	LINKAGE ARM	010039-0004
27	1	CONTROL QUADRANT	560002-0000
28	1	SIGHT GLASS	010136-0000
29	1	SIGHT GLASS RETAINER	240172-0000
30	2	SIGHT GLASS GASKET	220008-0000
31	1	IGNITION ELECTRODE	921000-0700
32	1	FLAME ROD	921000-0800
33	1	JUNCTION BOX	75171-K
45	1	BLOWER WHEEL	340049-1000

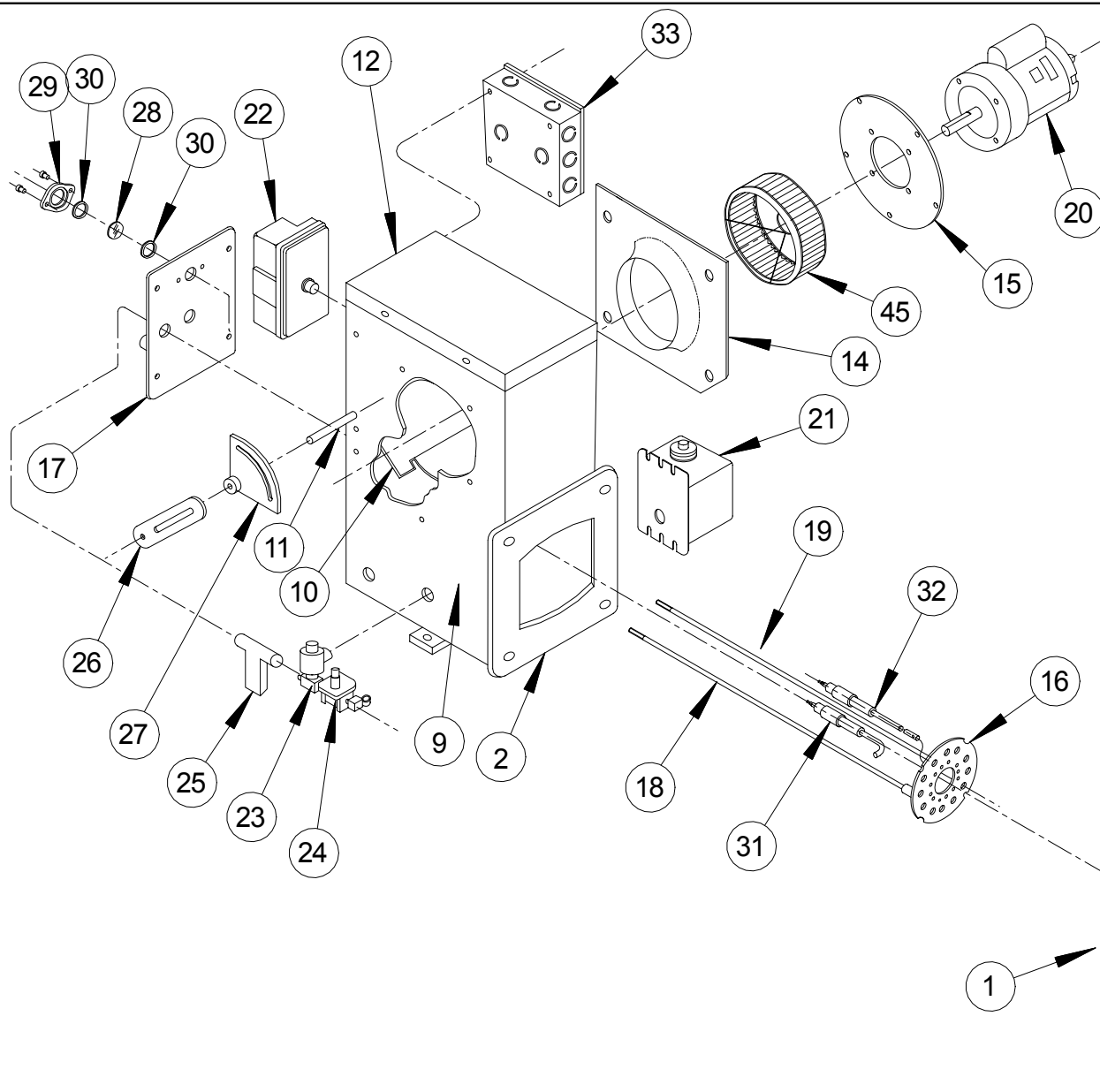
NOTE: PILOT COMPONENTS AND COMBUSTION HEAD MAY VARY

GP COMBUSTION EQUIPMENT INC.
CAMBRIDGE, ONTARIO

TITLE
MODEL C12.9-N-30
CUSTOMER: TYPICAL

SIZE	DATE	DWG NO.	BY:	REV
A	SEPT 1,04	ML-12.9-TYP	RR	A

SCALE: NTS ALL DIMENSIONS ARE INCHES SHEET: 1 OF 1



No.	QTY	DESCRIPTION	GP PART No. OR VENDOR No.
1	1	COMBUSTION HEAD	930104-5012(8")
2	1	GASKET HEAD HOUSING	C12-HD GASKET
5	1	ORIFICE NIPPLE	T.B.A.
9	1	HOUSING WELD ASSY	904001-7000
10	1	AIR DAMPER ASSY	910000-6900
11	1	DAMPER SHAFT	913001-0900
12	1	TOP COVER HOUSING	928002-9700
13	1	COVER WIRING	905005-7500
14	1	AIR INLET CONE	150007-0000
15	1	MOTOR MOUNTING PLATE	051030-0001
16	1	RETENTION PLATE ASSY	905006-7900
17	1	BACKPLATE ASSY	905006-7800
18	1	SUPPORT TUBE	907003-5200
19	1	PILOT TUBE ASSY	907003-5300
20	1	ELECTRIC MOTOR	3 HP-3600-56C
21	1	IGNITION TRANSFORMER	1092S
22	1	AIRFLOW SWITCH	AFS-A
23	1	PILOT SOLENOID VALVE	SV311A02N6CF5
24	1	PILOT GAS REGULATOR	RV47L-3/8"
25	1	PILOT FIRING VALVE	3380-3/8"
26	1	LINKAGE ARM	010039-0004
27	1	CONTROL QUADRANT	560002-0000
28	1	SIGHT GLASS	010136-0000
29	1	SIGHT GLASS RETAINER	240172-0000
30	2	SIGHT GLASS GASKET	220008-0000
31	1	IGNITION ELECTRODE	921000-0700
32	1	FLAME ROD	921000-0800
33	1	JUNCTION BOX	75171-K
45	1	BLOWER WHEEL	340025-1000

NOTE: PILOT COMPONENTS AND COMBUSTION HEAD MAY VARY

GP COMBUSTION EQUIPMENT INC.
CAMBRIDGE, ONTARIO

TITLE				
MODEL C12.8-N-30 CUSTOMER: TYPICAL				
SIZE	DATE	DWG NO.	BY:	REV
A	SEPT 1,04	ML-12.8-TYP	RR	A
SCALE: NTS		ALL DIMENSIONS ARE INCHES		SHEET: 1 OF 1